

TRITON®

The most intelligent high efficiency commercial gas water heater in the market.

130 MBTUH - 400 MBTUH

WH 95-98% Efficiency
80 & 100 gallons (ASME & non-ASME)



Click icon to learn more.



Eliminate the Emergency

- Built-in intelligence helps eliminate business downtime
- LeakGuard™ all-inclusive leak detection system with proprietary auto shut-off valve limits leakage to no more than 24 ounces of water¹
- LeakSense™ detects leaks as small as a grain of sand
- Systematic health checks: ongoing self-monitoring to detect and alert potential issues



Convenient Controls

- Remotely monitor vital components with EcoNet Smart Monitoring Technology
- Receive maintenance alerts and reminders for multiple sites via the EcoNet app
- Save energy by selecting occupied hours for Triton to operate only when needed



Easy Installation & Retrofit

- Designed to replace any other commercial gas water heater: manifolds with any other brand and features five water inlet and outlet connections for easy piping
- Multiple vent material options: Polypropylene, PVC, CPVC, InnoFlue® Flex Vent, and ABS
- Built-in condensate neutralizer eliminates the need for a separate device for safe drainage



Built to Last

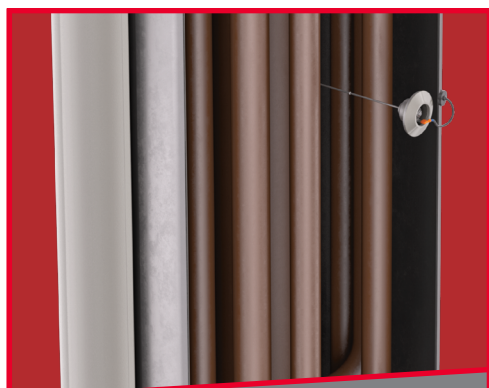
- Durable ASME-grade steel triple-pass heat exchanger and power anode rod
- Built to last five years longer than the industry standard, saving more than \$4,500 on replacement costs²

Optional Accessories

- ☒ Flex vent kits
- ☒ Concentric vent kits



HIGH EFFICIENCY



ASME-GRADE

Steel Heat Exchanger

Applicable for domestic hot water heating in gyms, commercial kitchens, small businesses, and more.



Learn more about
Triton water heaters
at **Raypak.com**

¹SS model only. ²Source: According to the US Department of Energy, a commercial water heater is expected to last seven years. Test data shows Triton is rated to last 12 years. The longer life will help avoid estimated replacement costs of \$4,500.

Model Number	A	B	C	D	E	F	G	H	I	Vent	Side Water Connection	Top Outlet
											Inlet/Outlet	
GHE80SU/SS-130(A)	67-7/8"	57.43"	26-3/8"	13"	12-1/2"	60-1/2"	10-5/8"	63-5/8"	70-1/16"	2", 3", 4"	2" NPT	1.5" NPT
GHE80SU/SS-160(A)	67-7/8"	57.43"	26-3/8"	13"	12-1/2"	60-1/2"	10-5/8"	63-5/8"	70-1/16"	2", 3", 4"	2" NPT	1.5" NPT
GHE80SU/SS-200(A)	67-7/8"	57.43"	26-3/8"	13"	12-1/2"	60-1/2"	10-5/8"	63-5/8"	70-1/16"	2", 3", 4"	2" NPT	1.5" NPT
GHE80SU/SS-300(A)	67-7/8"	57.43"	26-3/8"	13"	12-1/2"	60-1/2"	10-5/8"	63-5/8"	70-1/16"	3", 4", 6"	2" NPT	1.5" NPT
GHE100SU/SS-130(A)	77"	66-3/4"	26-3/8"	13"	12-1/2"	69.80"	10-5/8"	72-3/4"	77-1/2"	2", 3", 4"	2" NPT	1.5" NPT
GHE100SU/SS-160(A)	77"	66-3/4"	26-3/8"	13"	12-1/2"	69.80"	10-5/8"	72-3/4"	77-1/2"	2", 3", 4"	2" NPT	1.5" NPT
GHE100SU/SS-200(A)	77"	66-3/4"	26-3/8"	13"	12-1/2"	69.80"	10-5/8"	72-3/4"	77-1/2"	2", 3", 4"	2" NPT	1.5" NPT
GHE100SU/SS-250(A)	77"	66-3/4"	26-3/8"	13"	12-1/2"	69.80"	10-5/8"	72-3/4"	77-1/2"	3", 4", 6"	2" NPT	1.5" NPT
GHE100SU/SS-300(A)	77"	66-3/4"	26-3/8"	13"	12-1/2"	69.80"	10-5/8"	72-3/4"	77-1/2"	3", 4", 6"	2" NPT	1.5" NPT
GHE100SU/SS-400(A)	77"	66-3/4"	26-3/8"	13"	12-1/2"	69.80"	10-5/8"	72-3/4"	77-1/2"	3", 4", 6"	2" NPT	1.5" NPT

0" clearance to all combustible surfaces on sides and back; 6" for top.

